

INSULEX

INSULATION INSPIRATION

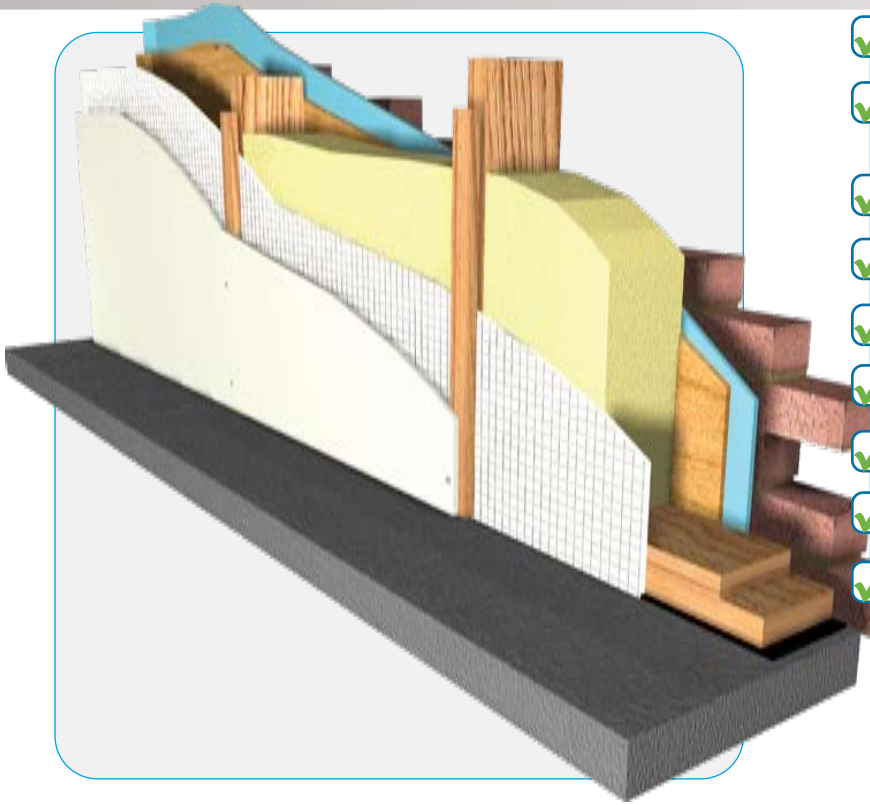
CI/Sfb

First Issue



THERMAL FOIL WALL LINER

Wall Insulation System

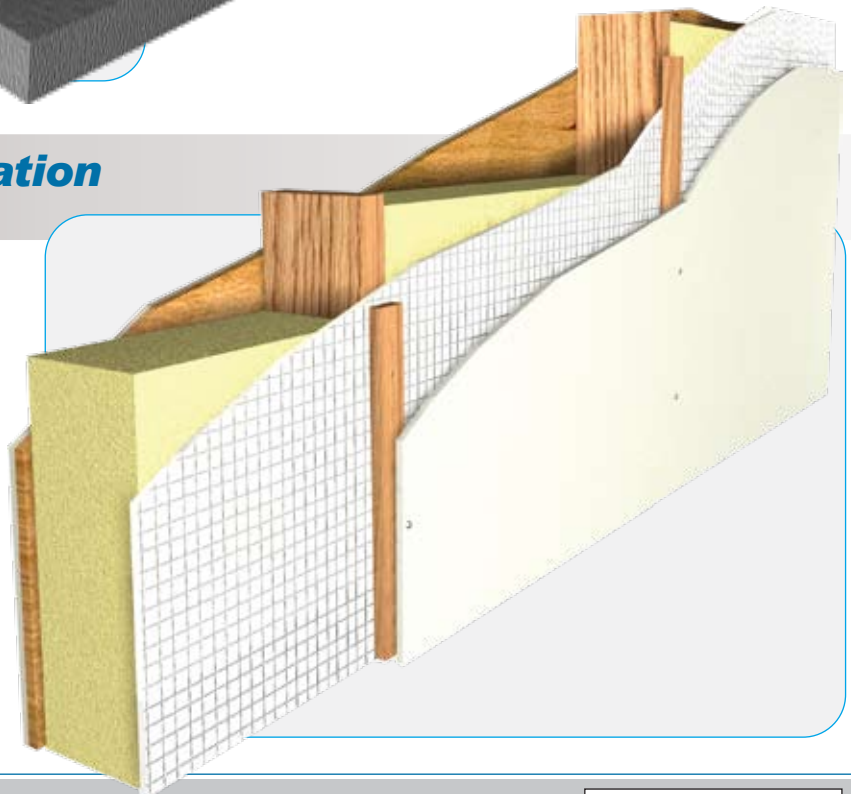


- ✓ Equivalent to 30mm of Mineral Wool
- ✓ Boosts U values to meet Building Regulations and Standards
- ✓ Clean Easy and Quick Installation
- ✓ Ideal for Re-Locatable / Mobile Buildings
- ✓ Improves the Air Pressure Rating
- ✓ BRE Certified
- ✓ CFC / HCFC Free
- ✓ Zero Ozone Depletion Potential (ODP)
- ✓ Global Warming Potential (GWP) of less than 5

Modular Building Insulation

Ideal for Mobile Buildings and Caravans

- ✓ Helps Achieve Building Regulations
- ✓ Improves U-Values
- ✓ Simple, Fast and Easy Installation
- ✓ Reduces Condensation Risk



BSK
Materials



INSULATING VAPOUR CONTROL MEMBRANE

Insulex Thermal Foil Wall Liner is a highly reflective insulating vapour control layer.

This has the added benefit of reducing the number of penetrations to the vapour control layer. Insulex Thermal Foil Wall Liner increases the thermal efficiency of the wall and eliminates any condensation risk.

Performance

Insulex Thermal Foil Wall Liner is **THERMAL EQUIVELANT TO 30MM OF MINERAL WOOL OR 15MM POLYURETHANE.**

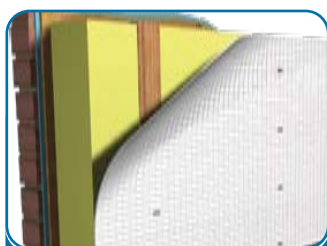
Fixing Instructions

Insulex Thermal Foil Wall Liner replaces the standard Vapour control layer/vapour barrier, and is applied in the same way with the use of staples and a staple gun. Ensure that the foil side faces towards the inside of the building. Then fix 20mm (minimum) battens, either horizontally or vertically as per your plasterboard requirements.

All laps should be foil taped as well as any penetrations.



Remove the inner panel(s) and replace insulation as required.



Fix the Insulex Thermal Foil to the studwork



Tape overlapping joints with foil tape and fix 20mm battens to the Thermal Foil Bubble



Replace the panels and apply a suitable finish

U-Values

Stud Size	89mm			95mm			140mm		
Insulation K Value (Mineral Fibre)	0.044	0.04	0.035	0.044	0.04	0.035	0.044	0.04	0.035
Insulex Thermal Wall Liner	0.35	0.34	0.32	0.34	0.33	0.31	0.27	0.25	0.24

U-Values below 0.3 W/m²K will help to meet Part 6 of the Scottish Building Standards.

U-Values below 0.35 W/m²K will help to meet Part L1A of England and Wales.

For further Technical information or u values, SAP ratings, Extension Calculations, etc, please contact BSK Materials on 01634 292 700 or by e-mail: technical@bsk-laminating.com

Specification

		Insulex Single Foil
Description	Corrosion resistant coated, low emissivity aluminium foil backed by a Polyethylene film.	Foil to one side
Dimensions:	Thickness	1mm
	Weight nominal	206 gsm
	Roll size	1.05, 1.2, 1.5 x 25m and 50m
	Roll weights nominal	
Performance	Thermal performance with 20mm clear cavity to foil face	0.665 m ² K/w
	Water Vapour resistance	>150 MNs/g
	Fire Properties BS476 Part 1	Class 1